

Features at a Glance

High precision imported paper tooth row drive chain

- * High-precision imported paper tooth row drive chain5 imported paper tooth rows, each with 10 fine steel paper teeth and matching tooth pillows.
- * Paper inlet and outlet monitored by electric eye for accurate positioning.
- * Entire process monitored by electric eye, with detailed troubleshooting via large-capacity LCD screen.
- * Forced lubrication system for key parts with 0.75 kW cooling circulation, oil pressure display, and control.
- * Paper blowing device for sheet separation before die-cutting.

High stack receiving section

- * Buffer device for tension wheel of tooth row drive chain.
- * Adjustable sectional brush and paper-flattening blowing device for stable product stacking in the receiving section.
- * PLC-controlled automatic spraying device for main chain lubrication.

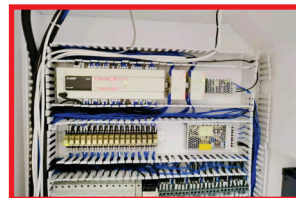
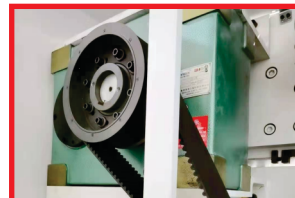
Electrical control department

- * PLC controls the operation and fault monitoring system of the entire machine.
- * Electrical components and circuits comply with advanced European and American safety standards (CE).

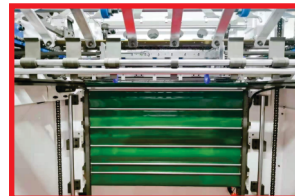
Standard accessories :

- * Large operation platform.
- * Two die-cutting hard steel plates (5 mm thick, HRC 45–47 hardness).
- * One die-cutting plate frame assembly.
- * One extra set of gripper tooth rows.
- * Complete tool set.

Wall panel thickness measurement



Index Driver



Paper receiving section with non-stop delivery system

Technical Specifications

Max Sheet Size	: 1080 x 780 mm	Max speed	: 7500 Sheets/Hour (Depending on the arrangement of die-cutting products, paper factors and operating factors)
Min sheet size	: 400 x 370 mm	Max pressure	: 320 Ton
Max die cutting area	: 1060 x 760 mm	Main motor power	: 11kw
Inner diameter of plate frame	: 1080 x 745 mm	Total electricity consumption	: 16.65kw
Die cutting steel plate size	: 1080 x 736 mm	Compressor	: Air compressor discharge 0.36m³/ 380V 3 phase 50HZ
Applicable paper range	: 0.1-3mm cardboard, corrugated board thickness ≤ 4mm	Net weight	: 16.2Ton
Min Gripper	: 9 mm (Depending on the arrangement of die-cutting products, paper factors and operating factors)	Overall machine size	: 6850 x 3950 x 2160 (L x W x H)



Autoprint Machinery Manufacturers Pvt. Ltd.,

An ISO 9001 : 2015 Certified Company

"Kaanchan", No. 9, North Huzur Road, Coimbatore - 641 018.Tamil Nadu. INDIA.

☎ : +91 422 2212416 / 4225444, +91 91594 06060

E-mail : info@autoprint.co.in | Web : www.autoprint.in

Toll Free No. 1800 425 4333



Due to continuous development and product improvements, the company reserves the right to change/alter the specifications mentioned herein.



**EXTRA
WITH
DEXTRA**



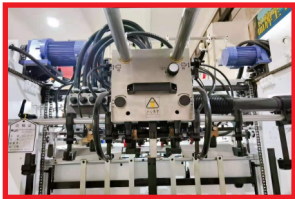
**Pack a greater punch At a low investment
With Autoprint Dextra 106 E**

Automate your Packaging Line with Autoprint Dextra 106 E

Autoprint in order to meet various request of printing and packaging market, we designed Dextra 106 E Automatic Foil Stamping Die Cutting Machine, which is the greatest research and development and manufacturing of new equipment with a higher degree of intelligence. This machine adopts numerous advanced pneumatic and servo driving processing technology from abroad. After the strict assembly quality control, it has advantage of simple operation and safe reliable. It can do creasing, kiss cutting, Foil Stamping and die cutting. It can work with substrates such as paper, cardboard, corrugated paper below 4mm, pasting paper, laminating paper from 80 GSM - 2000 GSM Machine builds quality and Design ensures that it works stable and safely even at 7000 sheet per/hr.

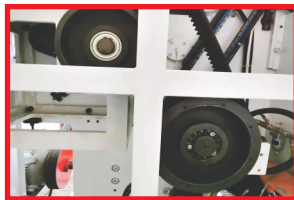
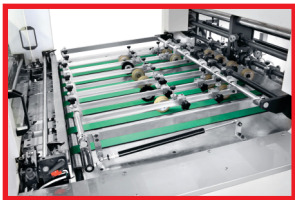
MACHINE FEATURES: FEEDER/FEEDING SECTION

- * High-speed feeder head with electrostatic removal function.
- * Equipped with four suction and four feeding mechanisms, ensuring stable and smooth paper feeding. The height and angle of the suction nozzle can be adjusted as needed.
- * Open-and-close preparatory trolley for improved operational efficiency.



CONVEY UNIT

- * High-speed paper feeding table, ideal for high-speed thin paper transportation and accurate positioning.
- * Non-stop lifting table device.
- * Dual tension control system.
- * Side positioning uses a pull-and-push side gauge device, which can be selected based on paper type and switched easily.
- * High-quality vacuum pump for both blowing and suction operations.



Synchronous belt

Vacuum pump

SAFETY, QUALITY & PRODUCTIVITY

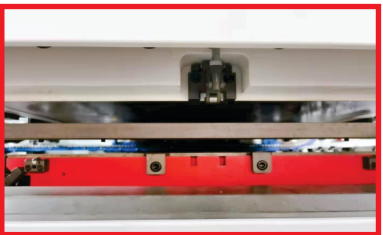
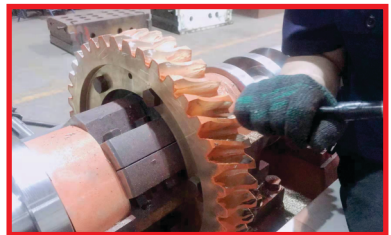


DIE CUTTING UNIT

Elbow-type high-precision plane die-cutting lower table driven by turbine crank.

Fixed high-precision plane die-cutting upper table for consistent and accurate cutting results.

Key components (crankshaft, worm, worm gear, elbow shaft) are made from imported high-grade alloy steel and are precision-scraped by hand for superior accuracy and durability.



PNEUMATIC CLUTCH

Two sets of die-cutting steel plates with HRC 45–47 hardness for exceptional accuracy and durability, secured with a side-lock system.

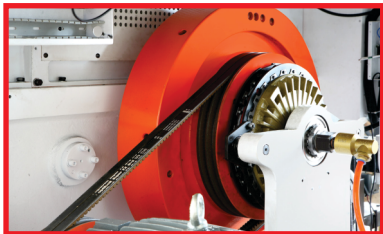
Pneumatic locking system for the die-cutting frame. High-torque pneumatic clutch with brake.

Electric digital display for platform height and pressure adjustments, ensuring accurate pressure control.

Working pressure protection device with a maximum capacity of 300 tons and over pressure shutdown protection.

Front gauge positioning flap adjustable at four independent points for precise alignment under various paper conditions.

Advanced single-tooth row positioning allows fine-tuning before and after operation to maintain high processing accuracy. Latest multi-plate parallel cam intermittent chain drive mechanism, equipped with imported splitter and torque clutch.



Main Chain

Gripper

